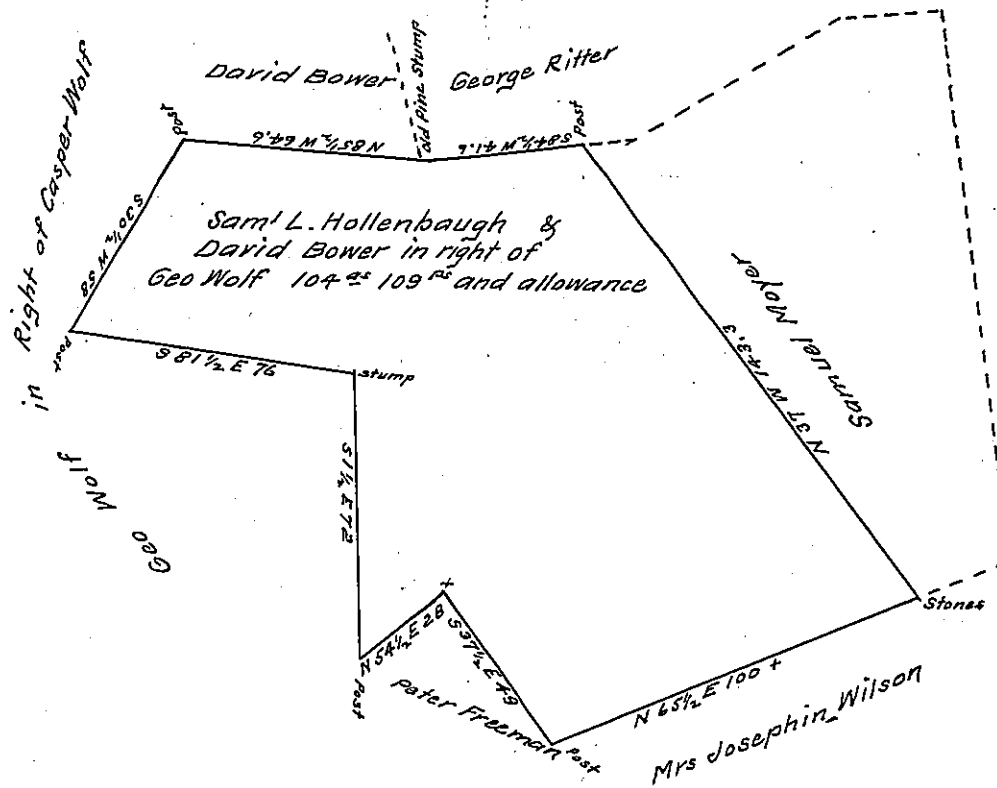


Course & Dist	Lat. N	Lat. S	Dep. E	Dep. W	Average Distances	N Areas	S. Areas
1 N 37° W 143.3	114.6				86.0	3557.8	40774.68
2 S 84½° W 41.6		4.00			41.3	228.5	914.00
3 N 85½° W 64.6	5.3				64.3	122.9	511.37
4 S 30½° W 58.		50.00			29.3	29.3	146.50
5 S 81½° E 76.		11.2	75.2		75.2	152.3	842.24
6 S 1½° E 72.			1.9		152.3	177.1	10965.60
7 N 54½° E 28	16.6	7200	22.9		177.1	1168.86	
8 S 37½° E 49		38.8	29.9		229.9	229.9	8648.56
9 N 65½° E 100+	41.5		91.0		350.8	14558.20	
						57013.11	
						21516.90	
						35496.21	
						17748.10	(104 ac)
						1694	
						7881	
						6784	
						109.7 P <sub>6</sub>	



Draft of a tract of land situate in Saville Township, in the County of Perry Containing 104<sup>ac</sup> 109<sup>ac</sup> perches and allowance of six per cent, for roads &c Surveyed for Samuel S. Hollenbaugh and David Bower the \_\_\_ day of April, 1870 being a part of a larger tract of 135<sup>ac</sup> 142<sup>per</sup> and allowance; originally surveyed in pursuance of a warrant granted to George Wolf dated the 27 day of Sept. 1815.

To Jacob M. Campbell  
Surveyor Genl.

S. H. Galbraith  
C.S.

IN TESTIMONY that the above is a copy of the original remaining on file in the Department of Internal Affairs of Pennsylvania, made conformably to an Act of Assembly approved the 16th day of February, 1833, I have hereunto set my Hand and caused the Seal of said Department to be affixed at Harrisburg, this

twelfth \_\_\_\_\_ day of April \_\_\_\_\_ 1909.

Henry Hoover  
Secretary of Internal Affairs.